



KB 400 - 900

BRASS AND NORYL IMPELLER



USES

Double impeller centrifugal pumps suitable for constructing pressurization systems for civil and industrial plants; the two impellers guarantee high head with good delivery.

CONSTRUCTION FEATURES

Cast iron pump casing with threaded openings; cast iron motor bracket; impeller in brass and Noryl; ceramic - graphite mechanical seal; motor shaft in AISI 303 steel; world leading brand ball bearings; Liquid temperature range 0 - 90 °C (0 - 50 °C if impeller in Noryl); max operating pressure: 10 bar up to CBT 751, 11 bar for larger models.



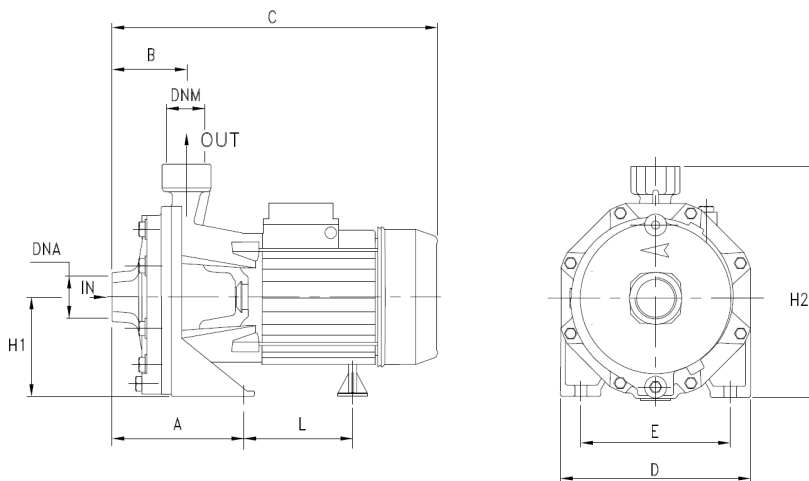
MOTOR

2 Pole electric induction Motor for continuous operations; stator made with low-loss laminated electric sheet steel; insulation class F; IP 44 protection level; thermal protection for single phase models; the user is responsible for supplying protection for three phase models.

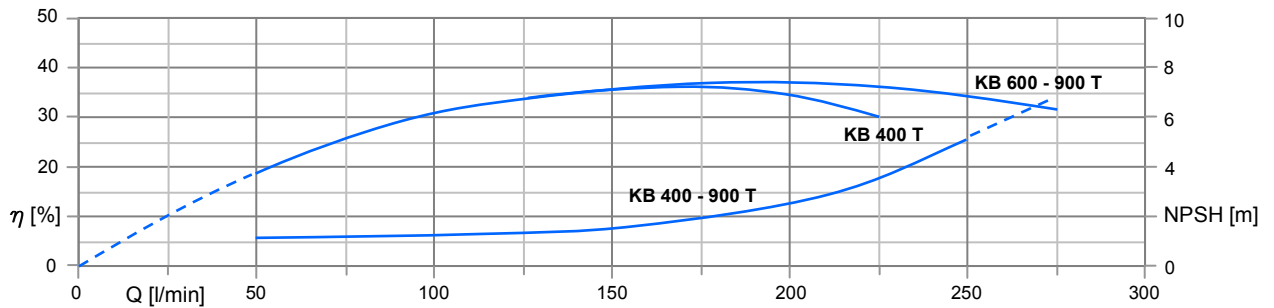
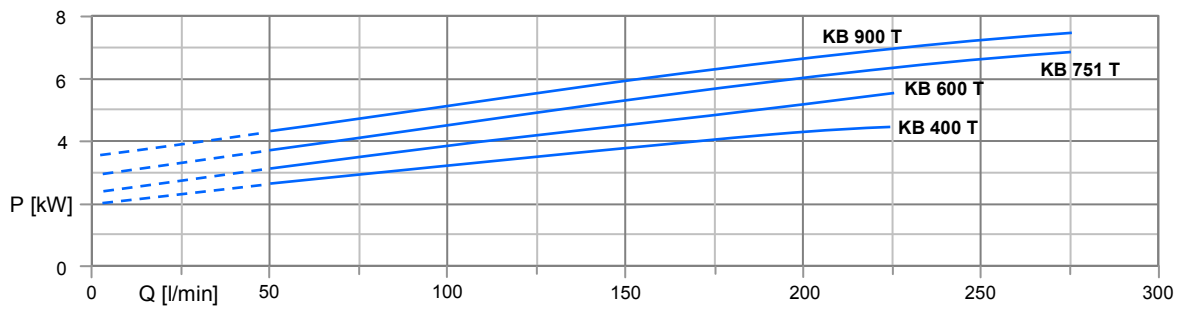
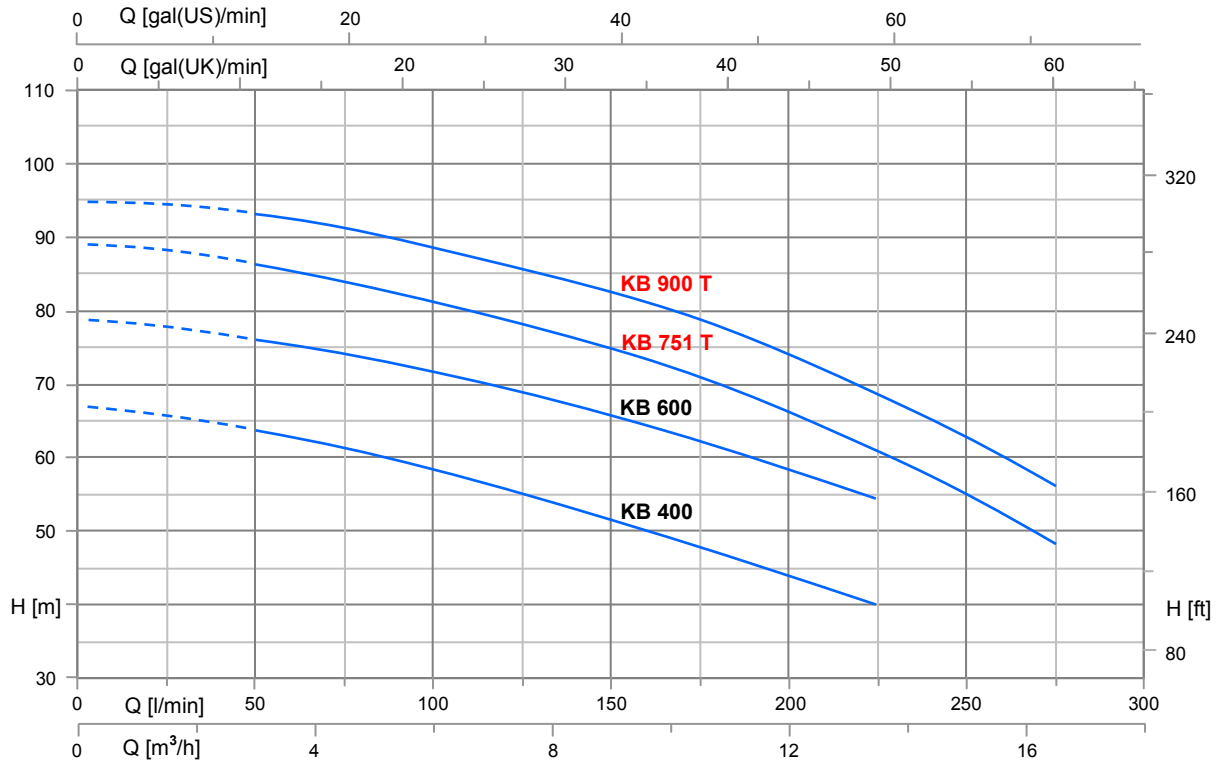
ON REQUEST

Other operating voltages and frequencies; special mechanical seal; special liquids.

Dimensions



TYPE	DIMENSIONS									Kg
	A	B	C	D	E	H1	H2	DNA	DNM	
KB 400 T	145	95.5	463	266	212	135	305	1"1/2 G	1"1/4 G	41
KB 600 T	145	95.5	463	266	212	135	305	1"1/2 G	1"1/4 G	44.8
KB 751 T	145	95.5	480	266	212	135	305	1"1/2 G	1"1/4 G	50.5
KB 900 T	145	95.5	480	266	212	135	305	1"1/2 G	1"1/4 G	55



Technical data

TIPO/TYPE		P ₂		P ₁ (kW)		AMPERE		Q (m ³ /h – l/min)									
1~	3~					1~	3~	0	1.5	3.0	4.5	6.0	7.5	9.0	10.5	13.5	16.5
230 V – 50 Hz	230 / 400 V – 50 Hz	(HP)	(kW)	1~	3~	1x230V 50Hz	3x400V 50Hz	0	25	50	75	100	125	150	175	225	275
								H (m)									
KB 400	KB 400 T	4.0	3.0	4.35	4.5	21.5	7.6	66.9	65.2	63.3	61.0	58.4	55.2	51.5	47.8	40.1	-
KB 600	KB 600 T	5.5	4.0	5.6	5.45	27.0	9.5	78.7	77.4	76.1	74.6	72.0	69.4	66.0	62.4	54.5	-
-	KB 751 T	7.5	5.5	-	7.0	-	11.5	91.0	90.0	88.6	87.0	85.0	82.3	79.0	75.3	66.1	54.5
-	KB 900 T	9.0	12.3	-	7.5	-	13.1	94,2	93,8	92,8	91,2	88,7	85,7	82,5	79,1	69,4	56.0